

BUSINESS PROFILE



Electrical Contractors...

**CONSTRUCTION • RETICULATION
PETROCHEMICAL • REFINERY • OFFSHORE
MAINTENANCE • REPAIRS**

1. COMPANY BACKGROUND

Izazi Technologies cc is an Engineering and Construction Company with its headquarters in Mossel Bay, Western Cape and a branch in Port Elizabeth, Eastern Cape. It consists of a core team of Engineers and Electricians that manage the business on a full time basis. Additional staff is contracted in as when required using local people first, from the area where the project is.

One of our key strengths is our technical depth coupled with a good understanding of our customer's needs. We believe in supplying good quality products and an excellent level of service.

Along with the growth of Izazi Technologies, we have a number of ideas that we would like to implement within the communities we operate, to empower the historically disadvantaged groups by means of mentorship, skills transfers and necessary training where required.

We believe that with our attention to detail we will grow to be a preferred company within the Engineering Supply and Services Industry

2. VISION

To become one of the preferred Engineering and Construction Companies in South Africa.

3. MISSION

To establish lasting relationships, through excellent quality service and to plough back into the communities within which we do our business by way of implementing self sustainable projects.

4. COMPANY INFORMATION

Registered name:	Izazi Technologies cc
Registration number:	2004/090814/23
Banking Details:	ABSA, Mossel Bay, 4072094035
VAT Registration number:	4030222071
Income Tax number:	9834/671/14/2
COID:	2472-103-0500
Electrical Contractor's Board:	CT3924
CIDB Grading:	3EB PE, 3EP PE (No. 136462)
BBBEE Rating:	Level Three (110%) Contributor (EME)

OFFICE	POSTAL ADDRESS	PHYSICAL ADDRESS	TELEPHONE	FACSIMILE
Mossel Bay	P.O. Box 11159 Heiderand, 6511	Cnr Loius Fourie & Essenhout Str Heiderand, Mossel Bay, 6500	(044) 693 4825	(044) 693 4347
Port Elizabeth	P.O. Box 828 Port Elizabeth, 6000	19 Albany Street Port Elizabeth, 6000	(041) 487 1113	(041) 487 1113

Email: ngcizela@izazitechnologies.co.za OR gadugadu@izazitechnologies.co.za

5. NATURE OF OUR BUSINESS

Izazi Technologies is a professional services company and with the skills, expertise, experience and knowledge, we are able to offer the following services to our clients:

5.1 Electrical Reticulation

- Overhead power lines and equipment
- Low cost housing
- Underground cable network
- Mini-substations and Kiosks
- Street and Area lighting

5.2 Construction

- Substation Buildings
- Structural Buildings
- Residential and Commercial Building
- Pump station Buildings

5.3 Petrochemical (Refinery and Offshore Platforms)

- Electrical switchgear and control panels
- Cable trays and wire-ways
- Cable laying and termination
- Small power and Plant lighting
- Battery chargers and batteries
- Classified / Hazardous Area Equipment Installation

5.4 Maintenance and Repairs

- Municipal maintenance
- Credit and Prepaid electricity meters
- Electrical networks
- Electrical Panels

5.5 Telecommunication

- BSS Room DC Power Installation
- Room and Site AC Reticulation
- 900, 1800 BTS Equipment Installations
- Node B Installation
- RF Cable installations

Izazi Technologies has the following systems in place that ensure that projects are delivered safely and with quality:

Complete Health and Safety File for each project including Legal Appointments, Site Induction programme, Baseline and Daily Risk Assessments, Safety Toolbox talks, Issue of PPE List, Equipment Registers etc

ISO 9001:2008 Quality System: We are an accredited ISO 9001:2008 Quality Management System company and our operations are guided by processes and procedures that ensure consistent delivery of quality service in line with our company mission statement.

6. MEMBERS

OSMOND NGCIZELA (Mr.)



Professional and Academic Qualifications:

- B-Tech Degree (Electrical Engineering HC)
- National Diploma (Electrical Engineering HC)
- Certificate (Project Management)
- Pr. Technic Eng. (ECSA, Reg. No. 200230031)
- Reg. Install. Electrician (Licence No. 29012)
- Specialised Electrical Installation Rules
- Cable Joints (XLPE & PILC 6.6/11kV)
- ORHVS for Authorised Persons (Module 1 - 10)

Career History:

Izazi Technologies:	2005 – Current (Manager: Projects & Planning)
PetroSA, GTL Project:	2002 – 2004 (Elec. Engineer)
PetroSA, P&D Dept.:	2001 – 2002 (Elec. Designer)
PetroSA, Maintenance:	1998 – 2001 (Technician)

Assignments

PetroSA Electrical Distribution:	Jul 2011 – Apr 2012 (Elec. Engineer)
South Cape College:	Jan 2008 – Apr 2008 (Lecturer – Installation Rules)
KBR (PetroSA SCG Project):	Jan 2007 – Jun 2007 (E&I Construction Superintendent)
PetroSA (2006 Shutdown):	May 2006 – Nov 2006 (Elec. Engineer)

Career Highlights:

PetroSA South Coast Gas Project

E & I Construction Superintendent, responsible for construction management of all Electrical, Instrumentation and Hydraulic systems pertaining to the SCG Project Topside Modifications.

- TUTU, MCS, EPCU, HPU
- ESD, DCS
- Field Instrumentation, pneumatic and hydraulic tubing
- Condensate Forwarding and Meg Injection pumps
- Utilities including support trays
- QA/QC Dossiers

GTL Project

Discipline Engineer assisting with Engineering, Procurement, Construction and Commissioning of 1000 b/d Fischer Tropsch semi-commercial Plant

- 1 x 6.6kV, Siemens Switchgear and Protection Panels
- 1 x 6.6kV, 2.6MW ABB Motor
- 22 x 525V, CHI Switchgear Panels
- All Small Power and Lighting Installation

Plant Improvement Projects

Responsible for the Engineering and Management of various Plant Improvement Projects
Completed 20 Projects to the value of R3.5 million

Maintenance

- Variable Speed Drives
- Uninterruptible Power Supplies
- Battery Maintenance & Battery Chargers
- Cathodic Protection TRU's
- Hazardous Area Inspections

LUNCEDO GADU (Mr.)



Professional and Academic Qualifications:

- B Eng Degree (Electrical & Electronic Engineering)
- National Diploma (Electrical Engineering HC)
- Trade Test Certificate (Electrician)
- Reg. Install. Electrician (Licence No. 28046)
- Specialised Electrical Installation Rules
- Cable Joints (XLPE & PILC 6.6/11kV)
- ORHVS for Authorised Persons (Module 1 - 10)

Career History:

Izazi Technologies:	2005 – Current (Manager: Operations & Construction)
PetroSA Refinery:	2004 – 2005 (Trainee Engineer)
SASOL Solvents:	1999 – 2000 (Trainee Electrician)
Desta Transformers:	1998 (Trainee Technician)

Assignments

PetroSA Electrical Distribution:	Jul 2011 – Apr 2012 (Elec. Engineer)
South Cape College:	Jan 2008 – Apr 2008 (Lecturer – Installation Rules)
South Cape College:	Jan 2007 – Apr 2007 (Lecturer – Electrical Engineering)
PetroSA (2006 Shutdown):	May 2006 – Nov 2006 (Elec. Engineer)

Career Highlights:

Municipality Projects

Construction Manager for most of the Projects undertaken by Izazi Technologies on the following:

Mossel Bay Municipality Projects

Bitou Municipality Projects, and

George Municipality Projects

Desta Transformers (Now ABB):

- Responsible for all Routine and Type Testing of Power Transformers up to 132kV, 40MVA
- Testing of Voltage and Current Transformers, Neutral Earthing Resistors and Mini-Subs

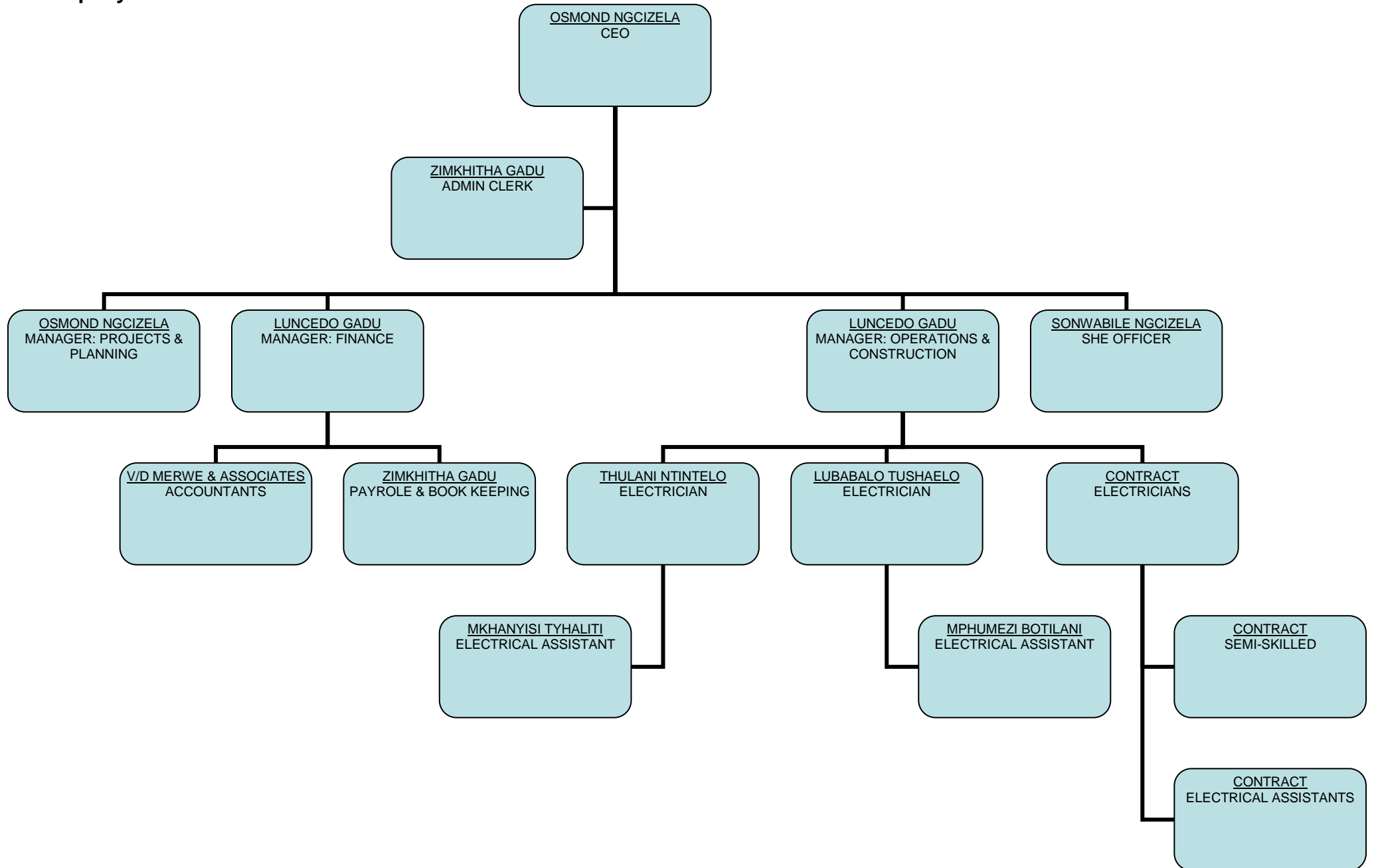
SASOL Solvents:

- Plant Lighting Maintenance and Repairs
- Switchgear Maintenance and Inspection
- Distribution Board Wiring
- Variable Speed Drives, 525V (Allan Bradley)
- Overhauling of three phase AC Motors
- Installation, wiring and testing of Motor Protection Relays
- House wiring and certification training

PetroSA Refinery:

- Variable Speed Drives
- Uninterruptible Power Supplies
- Battery Maintenance & Battery Chargers
- Cathodic Protection TRU's
- Repairs to Electronic PCB's
- Motorola UHF and VHF Radio repairs

7. Company Structure



8. CURRENT PROJECTS

CLIENT	PROJECT NAME	DESCRIPTION
VODACOM Year: Ongoing	Room Reticulation and BSS installation	DC Reticulation and Equipment Installation in VODACOM sites covering Eastern Cape Area including: Rectifier, Stand, and Batteries • TX Cabinet, DC Box, and SAM Unit • 2G BTS Cabinet • All Trunking, Cable Racks, DC Power Cables, Transmission Cables • Testing and Commission
George Municipality, George Consultant: CVW Mechanical and Electrical Engineers	The Supply, Installation and Commissioning of Energy Efficient Measures & Demand Side Management, with Associated Equipment for George Municipality	Replacement of Flourescent Lighting with LED Lighting in all Municipal Buildings including: Offices • Workshops • Clinics • Libraries • Community Halls • Substations • Sport Fields • Sewerage Works • Water Treatment Works • Pump Stations • Traffic Department • Municipal Stores.
Mossel Bay Municipality, Mossel Bay Consultant: CVW Mechanical and Electrical Engineers	The Supply, Installation and Commissioning of Energy Efficient Measures & Demand Side Management, with Associated Equipment for George Municipality	Replacement of Flourescent Lighting with LED Lighting in all Municipal Buildings including: Offices • Workshops • Clinics • Libraries • Community Halls • Substations • Sport Fields • Sewerage Works • Water Treatment Works • Pump Stations • Traffic Department • Municipal Stores.
Various	Building Electrical Installation	Several Installations from different clients including: Guest Houses • Game Lodge • Eco Estates • Retirement Village Community Halls • Churches • College Holiday apartments • Houses Shops and Offices

9. COMPLETED PROJECTS

9.1 Electrical Reticulation

CLIENT	PROJECT NAME	DESCRIPTION
PetroSA, CSI Dept. Consultants: QS – LDM Electrical - BDE Builder - OTB	PetroSA Wellness Centre Year: 2011	Supply and Install underground service cable for construction power to the PetroSA Wellness Centre, Kwa-Nonqaba including: 50mm ² x 4c power cable, 35 BC Conductor, 12way DD Kiosk complete with strobe light and 140m trenching
Bitou Municipality, Plettenberg Bay. Consultant: Clinkscale Maughan-Brown Year: 2011	Green Valley Sports Field – Relocation of Floodlights	Relocation of Existing Sports Field Flood lights to a Newly Constructed Sports Field.
Bitou Municipality, Plettenberg Bay Year: 2011	Supply and Delivery of High Mast Light (30m High) at Bossiesgif Residential Township, Plettenberg Bay	30m High Mast Light complete with Luminaires, DB, Wiring, Foundation, Earthing, Assembling and Erection.
George Municipality, George Year: 2011	Electrification of Informal Areas: 88 houses	Installation of Electricity Dispenser (ED), Ready Board, Mounting Board, Service cable, Earth conductor, Earth spike, Testing & Commissioning and Issuing of Certificate of Compliance in the following areas: Blanco (26 houses) • Protea Park (39 houses) • Lawaakamp (28 houses)
Bitou Municipality, Plettenberg Bay. Consultant: Clinkscale Maughan-Brown Year: 2010	Electrification of Qolweni (Phase 1D) and Bossiesgif (Phase 1C) for 2009/2010	Supply and Installation of approximately 8000 meters of Airdac service cable and Electrification of 375 houses at Qolweni. Relocation of the Overhead 11kV line including 200kVA PMT and relocation of approximately 570m of LV bundle conductor together with 18 pole mounted CSCB. Service connection to 75 Houses at Bossiesgif.

<p>Bitou Municipality, Plettenberg Bay.</p> <p>Year: 2010</p>	<p>Electrification of KwaNokuthula Temporary Housing Project</p>	<p>Terminate cable at PMT and Kiosk. Trenching and laying of approx 775m of underground cable. Service connection to 17 Houses including Mounting and Ready Boards and Pre-payment meter, commissioning and issue Certificate of Compliance</p>
<p>George Municipality, George</p> <p>Year: 2010</p>	<p>Electrification of Informal Areas: 744 houses</p>	<p>Installation of Electricity Dispenser (ED), Ready Board, Mounting Board, Service cable, Earth conductor, Earth spike, Testing & Commissioning and Issueing of Certificate of Compliance in the following areas: Kleinkrantz (54 houses) • Blanco/Golden Valley (45 houses) • Protea Park (80 houses) • Syfersfontein (254 houses) • Spandiel (28 houses) • Parkdene (66 houses) • Borchards (115 houses) • Wilderness (102 houses)</p>
<p>Umasizakhe Civils</p> <p>Year: 2008</p>	<p>Bontebok National Park, Swellendam</p>	<p>Electrical Installation, Reticulation and Commissioning on the Bontebok National Park including</p> <ul style="list-style-type: none"> • 1x 3.3kV / 400v, 200kVA Transformer • 5 x Distribution Kiosk • 10 x Chalets • 1 x Ablution Block
<p>PetroSA, Refinery</p> <p>Year:2008</p>	<p>N2 Highway Streetlights</p>	<p>Installation of the N2 Highway Streetlight along Duinzicht Avenue including:</p> <ul style="list-style-type: none"> • 4 x Beka Strada 250W HPS Light Fitting complete with 11.6m Heavy Duty GRP Pole • Cable jointing and termination • Trenching and planting of Poles • Repair and maintenance including replacing of the bulbs on 14 faulty streetlights using crane truck with bucket.

9.2 Construction

CLIENT	PROJECT NAME	DESCRIPTION
PetroSA, CSI Dept. Consultants: QS – LDM Electrical - BDE OTB – Builder	PetroSA Wellness Centre, Kwa-Nonqaba Year: 2011	Complete electrical installation for a new building including supply, delivery, installation, testing, commissioning and handing over. Scope: DB's, Prepaid Meters, Luminaires, Sockets, Switches, Geysers, Trunking, Main Reticulation, New Mini-Sub, Emergency system, Alarm system, Telephone and Data Trunking work.
Department of Public Works Year : 2011	Renovation to D'Almeida Clinic, Mossel Bay	Renovations to D'Almeida Clinic in Mossel Bay including: Socket outlets, Light Fittings, Public Address System, UVGI System, Plumbing and Tiling.
Department of Public Works Year : 2011	Renovation to Anysberg Nature Reserve, Lainsburg	Renovations to Anysberg Nature Reserve including: Solar Panels, Batteries, LED Lights, Standby Generator, Plumbing, Sceptic Tank, Bag Filter System, Replace all Ceilings, Replace all Doors, Roof Leaks, Complete Painting.
Groenkloof Ontwikkelings, Mossel Bay Year:2010	Building Electrical Installation in a retirement village	Electrical Installation in houses situated at Groenkloof Retirement Villages in: Groenkloof Retirement Village, Greatbrak
Roshcon, Eskom Gourikwa Power Station Year: 2009	Eskom GAS 1 Project	Electrical Installation and Commission on the Following Buildings: <ul style="list-style-type: none"> • MCC Room • Water Treatment Plant • Fuel Unloading Sampling room • Fuel Transfer Station • Fuel Forwarding Structure • Fuel Unloading Structure

<p>Roshcon, Eskom Gourikwa Power Station</p> <p>Year: 2008</p>	<p>Eskom OCGT Project</p>	<p>Electrical Installation and Commission on the Following Buildings:</p> <ul style="list-style-type: none"> • Chemical and Oil Store • Fuel Forwarding Structure • Fuel Unloading Structure and Sampling room
<p>Meissner, Langerberg Mall, Mossel Bay</p> <p>Year: 2007</p>	<p>Installation and Commissioning of Uninterruptible Power Supplies</p>	<p>Installation, wiring and commissioning of all the Meissner UPSs for their corporate clients on the new mall. Units range from 10kVA to 30kVA single and three phase.</p>
<p>Meissner, Garden Route Mall, George</p> <p>Year: 2007</p>	<p>Installation and Commissioning of Uninterruptible Power Supplies</p>	<p>Installation, wiring and commissioning of all the Meissner UPSs for their corporate clients in the new mall. Units range from 10kVA to 30kVA single and three phase.</p>

9.3 Petrochemical (Refinery and Offshore Platforms)

CLIENT	PROJECT NAME	DESCRIPTION
Martec, PetroSA Refinery Year : 2011	Partial Online Discharge Monitoring Equipment	Installation of Partial Online Discharge Monitoring Equipment on MV Motors at PetroSA Refinery
PetroSA, Refinery Year: 2009	Shutdown 2009 Battery Replacement Project	Replacement of Selected DCS 24V Systems 2.0V Cells and Replacing DC Smoothing Capacitors on 24V DCS Charger Units for PetroSA.
Aspen Pharmacare, Port Elizabeth Year: 2009	Dust Explosion Survey	Conducting the dust explosion survey for the Aspen Pharmacare factory in PE and compiling the report and recommendations for remedial action.
PetroSA, FA Platform (Offshore Installations) Year: 2009	SCG Project, Wax Inhibitor Pumps	Cabling and Installation of Wax Inhibitor Pumps including: <ul style="list-style-type: none"> • 2 x 380v, 0.75kW Pump Motors • Power, Heater and Control cables • Switchgear and Control Panel Modifications
Eskom, Gourikwa Power Station Year: 2008	Repeaters power supply	Electrical Installation for the Repeaters Power Supply including laying, pulling and termination of low voltage cables on 3 x 150 MW Open Cycle Gas Turbines.
Changing Tides, PetroSA Refinery Year: 2008	Autoclave Building	Electrical Installation on the Autoclave building including equipment specification and procurement of spares according to Hazardous Area Classification
WSP Projects, PetroSA Refinery Year: 2008	Biogas Project	Installation of Instruments and instrument cabling for the Biogas Project. The project consisted of 3 x 2 MW Gas Fired Generators.
KBR, FA Platform (Offshore Installations) Year: 2007	PetroSA South Coast Gas Project, Offshore	Topside Modifications on the FA Platform to allow the interface of new feed stock from subsea pipelines to the existing installation. Modifications included Electrical • Instrumentation • Mechanical • Piping • Hydraulics and Control. Our responsibility was the construction management of Electrical, Instrumentation and Hydraulics system installation, commissioning and quality control.

PetroSA, Refinery Year: 2006	Shutdown 2006 Planning and execution	<p>Oversee the complete integration of various Electrical activities from different department in line with shutdown schedule.</p> <ul style="list-style-type: none"> • Gadu – Execute the testing of the complete Protection scheme • Osmond/Gadu – Jointly managed the electrical activities during overhaul of 10MW critical steam turbine generator and inspection of 110MW steam turbine generator with GEC. • Osmond - Managed the electrical activities during overhaul of 26MW Air Compressor Motor with Siemens. The activities on this project were on a critical path of the Shutdown 2006.
PetroSA, Refinery Year: 2006	Protection scheme maintenance	<p>Tested complete protection scheme on the following:</p> <ul style="list-style-type: none"> • 132/11/6.6 kV Incomer Transformer • 3 x 6.6kV Motors • 4 x 3.3kV Motors
PetroSA, Refinery Year: 2006	6.6kV Switchgear and Protection	Swinging of the Offsites and Utilities section fan motor from a normal to a critical bus. Panel wiring of 6.6kV switchgear and Protection panel. Wiring and Functional checks and tested complete protection scheme.
PetroSA, Refinery Year 2005	Repair of Security System Printed Circuit Boards	Repairs on PetroSA's Security fence PCB's. These units are obsolete hence no spares from the manufacturers.
Cadbury, Port Elizabeth Year: 2006	Area classification	Conducting the area classification for the Cadbury factory in PE and producing drawings, compiling the report and recommendations
PetroSA, Refinery Year: 2005	Installation of a new Radio Dispatching System	Installation of the Motorola MCC 5500 Radio Dispatching system in the CCR as part of the CCR Migration Project
PetroSA, Refinery Year: 2005	Installation of a Public Address System	Installation of Public Address system for emergency response in 16 operator shelters including Speakers, Audio Amplifiers, switching and audio pair cables
PetroSA, FA Platform (Offshore Installations) Year: 2005	Replacement of Level Gauge Lights	Replacement of Plant wide Level Gauge Lights including cabling, termination, cable glands and junction boxes of Explosion proof rating in Hazardous Areas

9.4 Maintenance and Repairs

CLIENT	PROJECT NAME	DESCRIPTION
George Municipality, George Year: Ongoing	Change over from Credit and Prepaid Meters	Changing over from credit to pre-payment meters and replacement of ready-boards
PetroSA, FA Platform (Offshore Installations) Year: Ongoing	Maintenance of AEG Air Circuit Breakers	Service and Repair of AEG Air Circuit Breakers including supply of spares and material with support from Raise and Lower Pty Ltd, an agent for AEG in South Africa